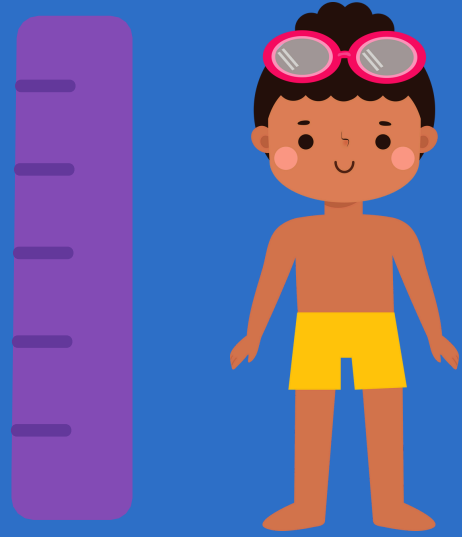




# WIBBIT RULES



Must be  
1.10 m/43"  
tall and 6+  
years old



Can swim  
in the big  
pool



6 year old users  
must have a PFD  
& an adult 16+  
years or older on  
the inflatable  
with them



Feet first off  
the inflatable,  
no diving or  
sliding head  
first



Remove keys,  
jewellery, and  
sharp objects.  
PFDs allowed



Two people can  
start together  
but cross and  
slide alone



Swim away  
from  
inflatable  
once you fall  
off or slide



Swim away  
from inflatable,  
do not swim  
underneath

Follow the Lifeguard's Direction